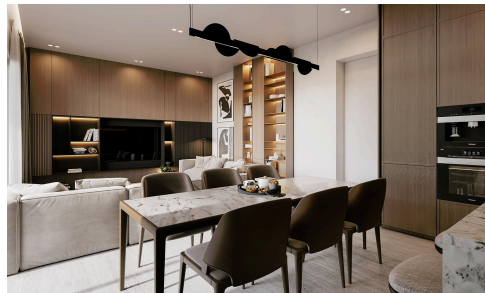
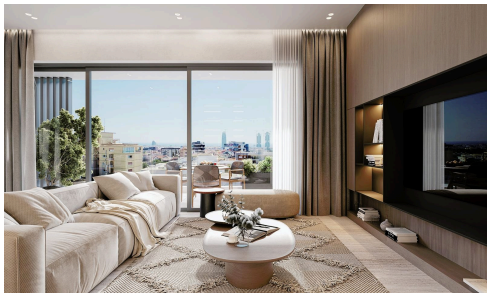


#2687



WHOLE RESIDENTIAL BUILDING FOR RENT IN **€15,000** /month MESA GEITONIA, LIMASSOL

 Mesa Geitonia, Limassol

Whole building for rent in the area of Mesa Geitonia, with easy access to the highway and to main streets. The three-floor building consists of six two-bedroom apartments, two apartments per floor, with internal area 93m² and covered veranda 27m². Two penthouses are also included which each features a roof garden 100m².

The building will be rented out with brand new furniture and appliances, with split units in the bedrooms and VRV system in the open plan area of the living room. The building features also automated gates and videocom system.

Bedrooms

 2

Covered

 720 m²


Energy efficiency rating

 A

OPTION
ESTATES



Joanna-Maria Kavvou

 (+357) 99140850

 joanna@optionestates.com

